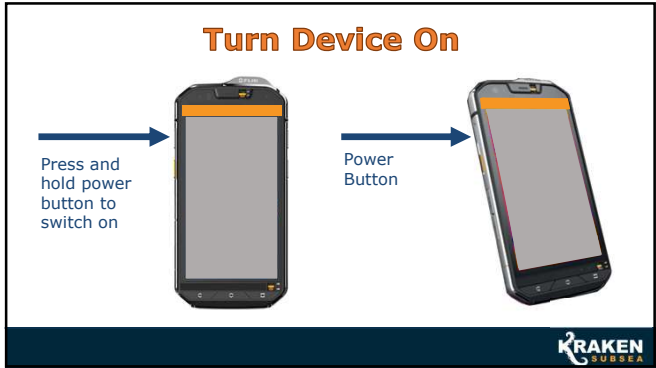
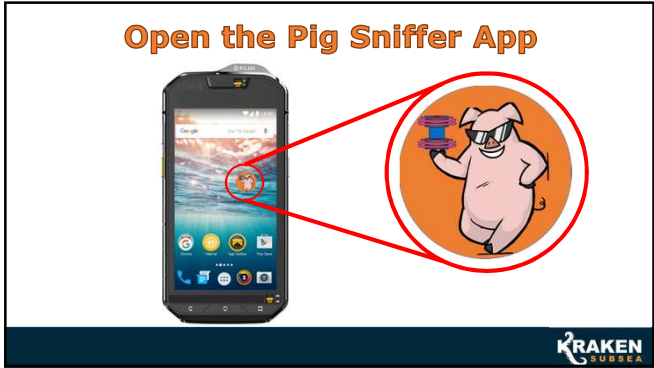




1



2



3



4

## Calibrating The Gauge

With the phone properly located on the pipeline, press the “ZERO GAUGE” button to calibrate the app.

**Note:** Recalibration is required when changing settings or restarting. Calibration is instant.

Zero Gauge Button



5

## Sniffing for a pig

With the device close/touching the pipeline, move down the pipe at a slow and steady space.

When a pig is believed to be discovered, move the device at least 180° around the pipe to confirm a positive signal at all positions, indicating the possible location.



Needle will move to **Green** section and device may vibrate once a magnetic field is detected



6

## Warning: False Readings

- Pipes can have isolated magnetic spots, or areas of fully magnetised circumferences, usually at welds and cut ends. This can generate false readings.
- To prevent false readings, confirm the device is at least 1m away from the cut ends and welds and move the device 180° around the circumference.
- Try it out yourself by calibrating the device away from one of the above and then move it close/over a cut or weld.



7



Thank you for using the Pig Sniffer by Kraken Subsea for more great products and information go to [www.krakensubsea.co.uk](http://www.krakensubsea.co.uk)

8